

# GENERAL INFORMATION



## General Information on Hwange National Park

Hwange National Park is certainly one of Zimbabwe's premier national parks with excellent game viewing in the dry season from June through to October.



In the wet months of December to March the scenery is beautiful with excellent birding opportunities. However, game viewing is more challenging due to the excessive growth, as there is abundant water throughout the park, the game disperses over a very large area, whereas in the dry season the game is more concentrated around the water holes. Bird watching is excellent throughout the year.

The National Park staff and attendants are extremely helpful and very friendly and will do everything in their power to make your stay a memorable one.

Crime is virtually non-existent within the Hwange National Park, however one must appreciate that you are in a national park with Big Five game roaming freely so all the necessary precautions must be strictly observed. The National Park's regulations must be strictly adhered to in order to prevent any unpleasant incidents. Please note that whilst visiting the National Park you are in the domain of the wildlife and they take precedence at all times over vehicles and human beings. For your benefit we have enclosed a basic list of do's and don'ts, however, this is not an exhaustive list and all visitors must comply with all National Parks rules and regulations.

## Profile on Hwange National Park

Named after a local Nhanzwa Chief, the Hwange National Park is the largest park in Zimbabwe occupying roughly 15 000m<sup>2</sup> in the North West Corner of the country to the South of (and not far from) the mighty Victoria Falls. It became the Royal Hunting Grounds to the Ndebele Warrior King Mzilikazi in the early 19<sup>th</sup> century and was set aside as a National Park in 1929.

During the dry season from May to October the park's roads are accessible by any vehicle with a high clearance. During the wet season, four-wheel drive is a must in certain areas and before arrival guests should seek advice on the best routes to use.



Hwange boasts a tremendous selection of wildlife with over 100 species of mammals and nearly 400 bird species recorded. The elephants of Hwange are world famous and the park's elephant population is one of the largest in the world.

The park has three distinctive administrative areas, namely Robins, Sinamatella and Main Camp. Kapula lodge is situated approximately 20km south of Sinamatella Camp and is adjacent to the Masuma Dam picnic site.

There are no fuel facilities in the National Park so guests must be sure to bring sufficient fuel for their stay. The nearest fuel is obtainable at Hwange Town, near Main Camp and Pandamatenga in Botswana.

Basic foodstuffs can be obtained at Main Camp. However, guests are strongly advised to bring everything they require with them in order to avoid disappointment. The nearest shops are in Hwange Town approximately 50km from Sinamatella.

Kapula Lodge is situated ideally in the Victoria Falls/Kasane/Kariba tourism hub and visits to the surrounding areas are easily accessible from Kapula, used as an en-route stop by tourists in the following areas:

- a) Mana Pools, Chizarera and Matusadona National Park south of Lake Kariba and the Lower Zambezi via Binga Milibizi and Kariba.
- b) En route to many Zambian tourist destinations through Victoria Falls/Livingstone.
- c) En route to the Botswana wilderness areas of Chobe, Savuti, Okavango.
- d) Alternatively, guests can simply come to Hwange and enjoy Kapula and other wonderful areas within the Hwange National Park.

### **Conservation Fees**

Hwange National Park's Conservation fees are payable upon entering the Park and reporting in at the appropriate office.

Website: <https://www.zimparks.org.zw/parks-rates.html>

### **Seasons & Recommended Vehicles:**

*Cold Season* : June – August  
*Hot Season* : October – January  
*Dry Season* : July – October  
*Rainy Season* : November – March – Travel **must** be done with a **4X4** vehicle as the roads in Hwange get very muddy and slippery.

A high-clearance vehicle is recommended for travel in Hwange during all other seasons.

## Kapula Camp... a luxury self-catering camp in the heart of the African bush

### **Kapula General Information**

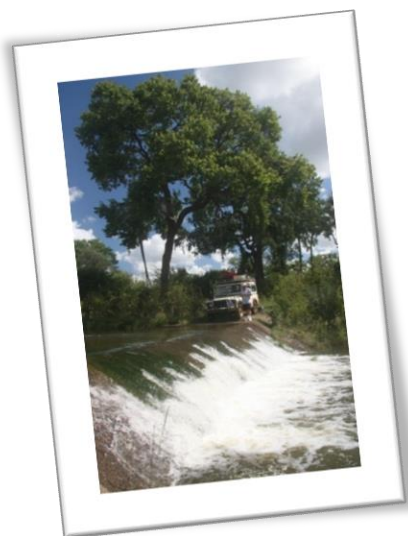
Kapula is a game viewing paradise during the dry season where guests can see vast herds of elephant and buffalo in addition to plains game and hear the lions roar at night.

Kapula is a big five game area with excellent game sighting in the dry winter months from June to October and wonderful birding in the summer months from November to May.

Situated in the famous Hwange National Park which is renowned for its huge concentration of elephant, Kapula's large game viewing deck on the main building overlooks the water hole in the Kapula Vlei.

Staying at Kapula will enable you to experience the enchanting Hwange National Park /Wilderness areas whilst spending peaceful moments in perfect harmony with nature.

Our friendly and well-trained staff will look after your every need in the tradition of warm African hospitality.



### **Location and Access**

There is a comprehensive map of the Kapula Concession on our website which we suggest you print and take with you. If you are not sure, consult the camp attendant at Masuma Dam.

Kapula is ±3km from the Masuma Dam Picnic Site.

- **Arriving from BOTSWANA via PANDAMATENGA BORDER POST:**

Kapula is 102 km from the Pandamatenga Border on a gravel road and will take approx. 3,5 hours to travel. This is a wonderful game drive from the border to the camp. Guests must check-in at Robins Camp to pay respective Park fees to National Parks Office at Robins Camp before continuing to Kapula. Robins Camp is recently upgraded and offers meals, drinks, accommodation, etc.

- **Arriving from VICTORIA FALLS / LIVINGSTONE:**

Travel South by tarred road (A8) to Hwange Town, approx. 100 km and takes approx. 1 hour. We suggest that you to top up on some supplies, petrol, diesel in Hwange Town. From here travel a good 40km dirt road to Sinamatella Camp (look out for Coal Trucks), situated in Hwange National Park, taking +- 1 hour. Guests are to check-in at Sinamatella to pay respective Park fees at the National Parks Office before continuing on to Kapula which is a further 28 km which takes about 1 hour, this section being a very productive game drive via Mandavu Dam and Masuma Dam.

- **Arriving from BULAWAYO:**

Travel North on tarred road (A8) towards Hwange Main Camp for approx. 254 km which takes about 4 hours. Turn Left on A8 towards Main Camp and travel a further +-24 km before checking in at Main Camp and paying the respective Park fees at the National Parks Office. Continue on to Kapula which is approx. 95 km (on a gravel road) takes +- 3,5 hours, this is also a productive game drive via the Guvulala and Shumba platforms.

### **Points of Interest**

The area between Kapula and Masuma Dam is always very productive from a game view perspective, so we recommend driving the concession and visit Masuma dam for a Sundowner.

Drive to Mandavu, Deteema and Shuma Picnic Sites are also recommended.



### **Accommodation / Facilities**

The Kapula concession consists of two camps: **North Camp** with four 2-bed luxury safari tents, self-catering; and **South Camp** which has 4 smaller en-suite tents accommodating up to 8 guests and 2 children. **The Platform** for 2 guests.

Kapula Camp electricity is Solar generated with a standby diesel generator.

The accommodation tents have small fans, however there is no provision made for hairdryers, etc.

The main building has facilities for charging laptops, camera batteries, cell phone batteries etc.

A Sat phone is available for guest use in case of emergencies at an additional charge.

Our staff is a vital link between our guests, Kapula and the wilderness and as a result we strive to create the highest level of service and friendliness possible.



## Kapula North Camp

Kapula is a self-catering lodge aimed at the discerning overland tourist who would like some of the home comforts while experiencing the pristine African bush.

Kapula North Camp currently has four luxurious executive style large safari tented suites, each on a raised wooden platform with panoramic views over the vlei. Each tented suite has two beds which can be made up as a king-size bed or two twin beds. Children can be accommodated on stretchers adjacent to the main bed. There are mosquito nets over the beds.



The Tents have en-suite facilities (shower/toilet and outside shower).

The main building consists of a kitchen with a gas stove, two fridges and a deep freeze. The large open plan area incorporates the lounge, dining room and serving counter with a decked area in the front overlooking the Kapula Vlei.

There is a fire pit situated approximately 20m to the side of the main building for experiencing evenings under the stars in front of the fire.

Bedding & towels are supplied by Kapula. Guests are to bring their own food, drink, personal toiletries and other personal effects, as would be expected when visiting a wilderness area.

We allow a maximum of two parties in North Camp, so guests have the option of booking either Tents N3/N4 or N1/N2 + Guide Tents. The Kitchen and Main Building facilities would then be shared. Alternatively, the whole North Camp can be booked.



## **Kapula South Camp**



South Camp is situated approximately 450m from North Camp. The tents are smaller than North Camp on Concrete platforms at ground level.

There is a common viewing platform overlooking the Kapula Vlei and waterhole which provides excellent game viewing opportunities in the dry months.

Guests can book one or more tents in South Camp. In this instance guests would then share the common facilities.

The Kitchen is a separate tent adjacent to the open "Boma" area and is fully equipped for all guest requirements.

South Camp Kitchen tent has a Fridge, Deep Freeze, 2 x Two-Plate Gas stoves, cutlery, crockery, pots, pans and all other kitchen utensils.

Bedding & towels are supplied by Kapula. Guests are to bring their own food, drink, personal toiletries and other personal effects, as would be expected when visiting a wilderness area.



## **Meals**

As Kapula Lodge is a self-catering establishment, guests are to ensure that they bring all the necessary foodstuffs and drinks required for their stay. Our staff have not been trained as chefs, but they are capable of cooking basic foodstuffs. Any service of this nature is to be discussed directly between the guest and the staff. The staff will be more than willing to assist in any possible way.

The staff are responsible for the maintenance, cleaning and servicing of the rooms and the main building on a daily basis.



## **Activities**

Experience the thrill of big game and plains game sightings from the front of your tented deck.

During the full moon in the dry season there will be game activity in front of the lodge for vast portions of the night, allowing excellent moonlight sightings of the game from the safety of your tent deck.



Walking safaris can also be arranged at extra cost directly with National Parks and will provide you with the opportunity of getting close to nature and appreciating the sights and sounds of the African wilderness. Enjoy the unforgettable adventure of an early morning bush walk.

Due to the close proximity to Masuma Dam Picnic Site, guests have the added advantage of utilizing the National Park's View site and Hide as well as other viewing platforms in the area.

Witness Africa's glorious sun sets from the Masuma Picnic Site while enjoying a "sundowner", then take a game drive back to Kapula Camp.

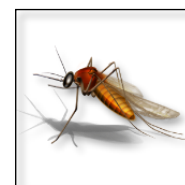
Kapula is ideally situated within easy reach of many other places of interest and is approximately 2km from the Masuma Picnic Site which has an excellent hide overlooking the Masuma Dam which attracts abundant wildlife during the dry season.

Kapula is furthermore centrally situated within the Hwange National Park and guests have the opportunity of easily exploring the many kilometres of game drive roads and picnic sites in and around the area.

Kapula also has its own private concession tracks for the 4x4 enthusiasts.

### **Malaria**

Please note that Kapula is a malaria area and all the necessary precautions should be taken by all guests.



### **Guest Safety**

Please note that the Kapula Lodge is unfenced and is within the big five game country and as a result guests are to exercise extreme caution when walking around as all wild animals can be dangerous. There is vehicle access to the entrances to all tents as well as the main building. Guests must use to transfer to the tents at night.

### **Insurance**

It is **strongly recommended** that all guests to the camp take out emergency evacuation insurance in the event of illness, accident etc.

Guests should be covered by travel insurance for any emergency evacuation in the event of an accident. This can be obtained from your travel agent.

The nearest hospital is situated at Hwange Town and is a rural hospital with limited services for guests.

